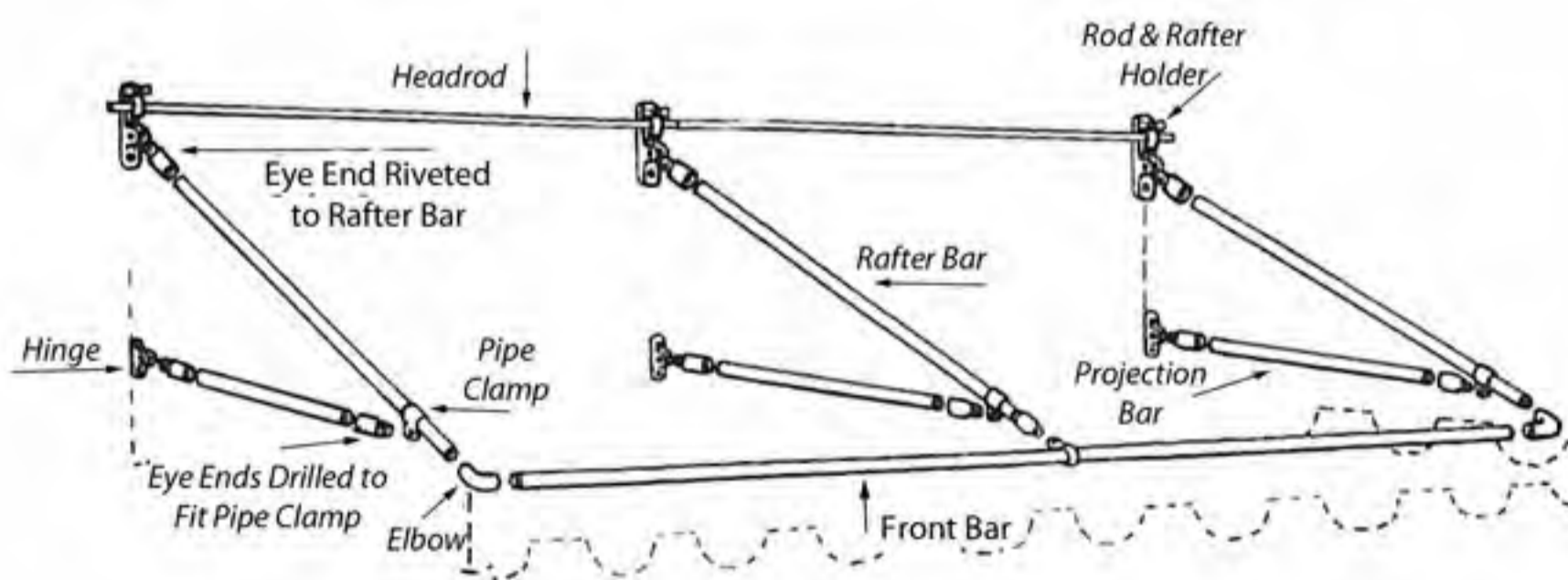
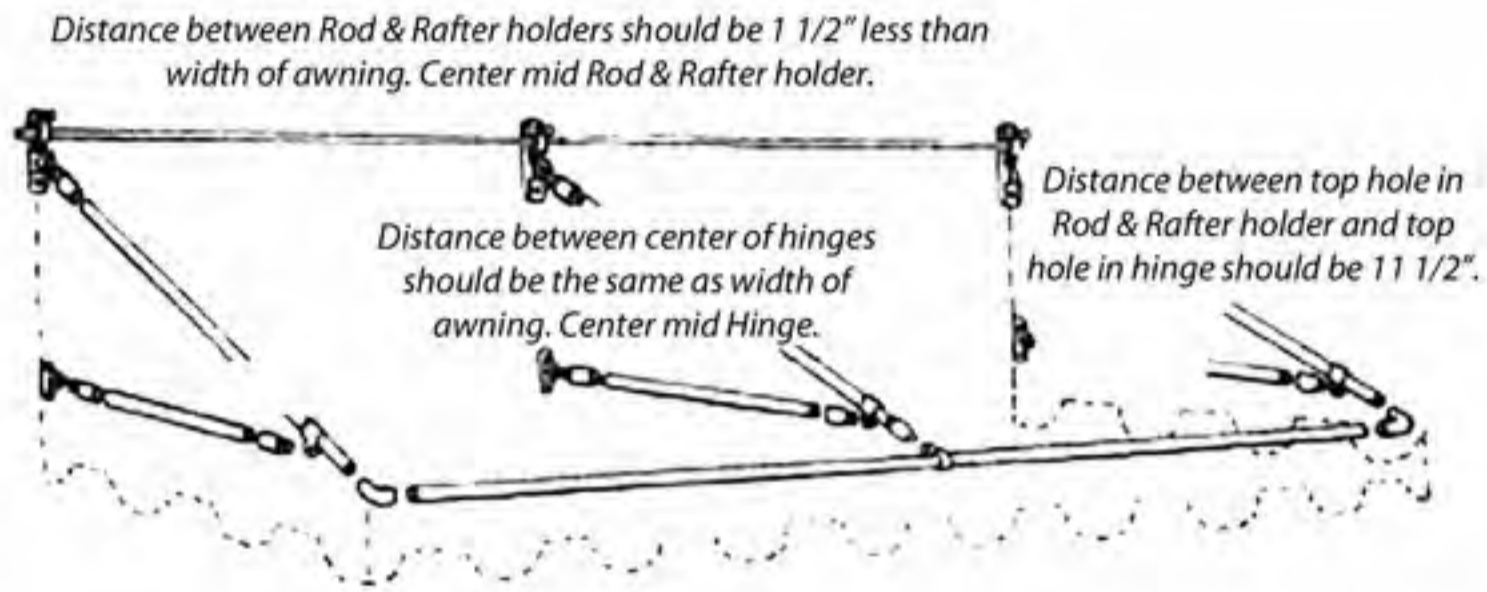




PYC AWNINGS

Installation for Door Awnings 72" to 95" Wide



1111 South Talbot St.
St. Michaels, MD 21663

800-933-6936

pycawnings.com

Read These Tips Before Installing

Rod & Rafter holders must be mounted to wall stud, door header or framing of structure. This is very important because Rod & Rafter holders support the entire weight of the awning, and support it during snow, wind and rain.

If no framing member, stud, header, etc. are accessible, wall anchors may be used and are available at most hardware stores. You should consult with a professional carpenter or contractor for the correct type of anchor you will need. All structures are different.

Very Important! Recheck all screws and set screws and tighten.

Awning must withstand mother nature. Tighten all screws and set screws. Also double check that no bolts or set screws are chafing fabric. They will rub holes in it if backwards.

We recommend using "Loctite" on all screws and set screws to prevent them from loosening or backing out. You can purchase "Loctite" at your local hardware store.

Remove snow should it accumulate. Brush off awning with broom and spray with hose occasionally to keep awning clean.

Hardware



Elbow



Hinge



Pipe Clamp



Rod & Rafter Holder



Eye End

Installation Instructions 72" - 95" Wide

1. Find center of door and measure off center for Rod & Rafter Holders on each end of awning.
2. Mount Rod & Rafter Holders 13 ½" above door. (actual door not trim) May be mounted further up if there is room, up to 18" is okay. Distance between Rod & Rafter Holders should be 1 ½" less than awning width.
3. Measure off center of door for hinge location the distance between hinges should be same as awning. Center middle hinge.
4. Measure from top hole in rod & rafter holders 11 1/2" down. This will be the location of the top hole in hinges. Install hinges.
5. Slide pipe clamp near the end of Rafter bars, leave loose will adjust later. Bolt eye end (drilled to fit pipe clamp) to pipe clamp. Attach rafter bars to rod & rafter holders with the eye end that is riveted to the rafter bar. Let hang down for now.

*Head of bolt should be facing outside of awning and the nut on the inside of awning, to prevent chafing. Also set screw on eye end should be facing inside for final adjusting and to prevent chafing.

6. Slide Headrod (fiberglass rod) into top pocket of fabric. Loosen wingnuts on rod and rafter holders. Insert headrod into rod and rafter holder over fabric. Tighten wingnuts. Let fabric hang down to slide next pipes through pockets.



7. Slide front bar (galvanized pipe) into front bar pocket. - be careful ends of pipe may be sharp.
8. Attach elbows to rafter bar and front bar at each corner with Allen head screws.
9. Slide 2 projection bars through side pockets. Attach eye ends on projection bars and attach to hinges. Middle projection bar will not have a pocket.
10. Attach other end of projection bars to eye end on pipe clamp. - then level by sliding clamp on projection bars. Then tighten clamps.

Tools Needed

DRILL OR DRILL DRIVER & DRILL BITS -TAPE MEASURE
SCREWDRIVER (PHILLIPS & STRAIGHT)
1/8" HEX-SOCKET OR 1/8" ALLEN WRENCH
12 MM WRENCH OR ADJUSTABLE WRENCH
LEVEL & PLIERS