

AwnTex[®]

by Price's Yacht Canvas
St. Michaels, Md
800-933-6936

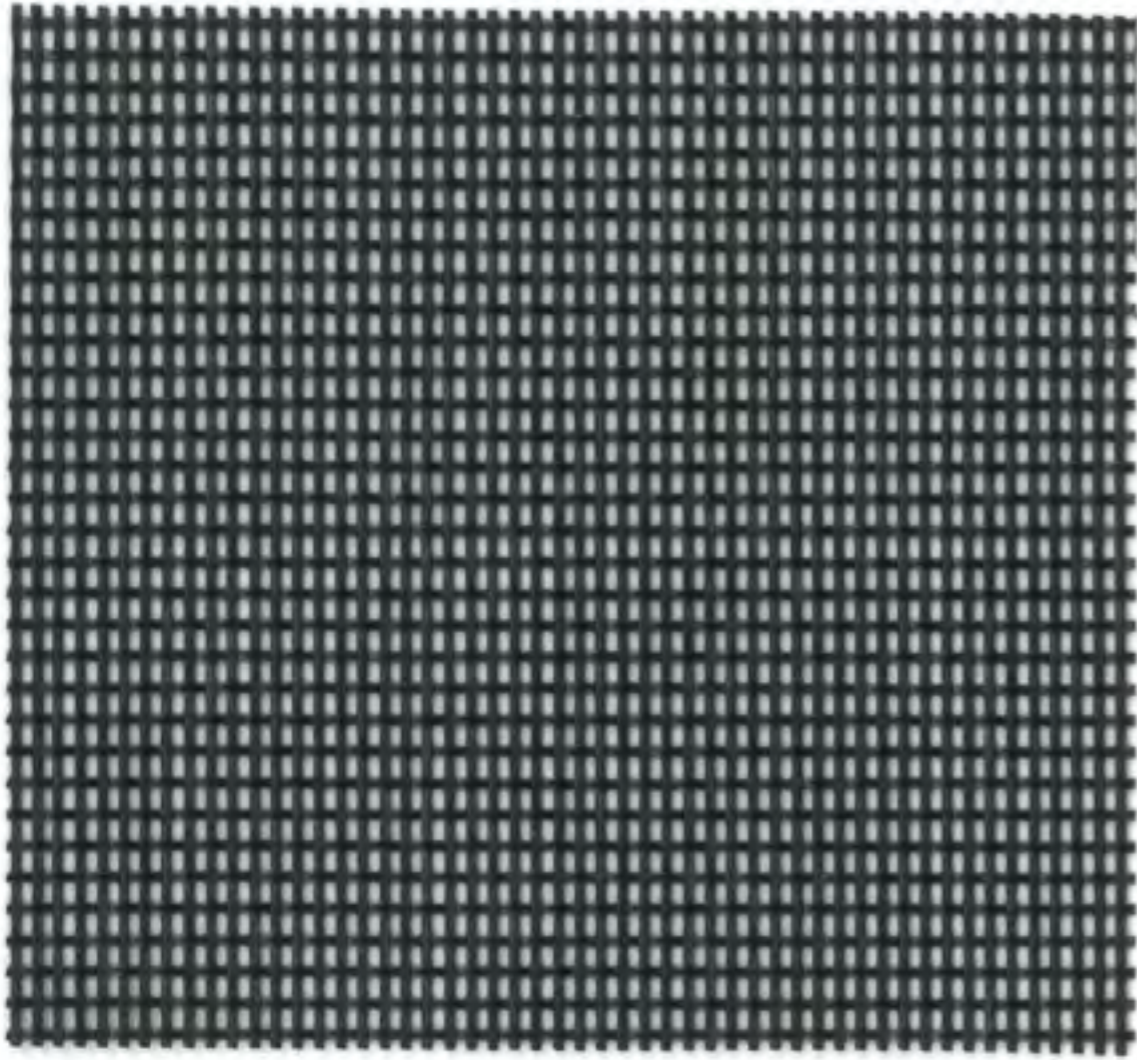


PYC AWNINGS

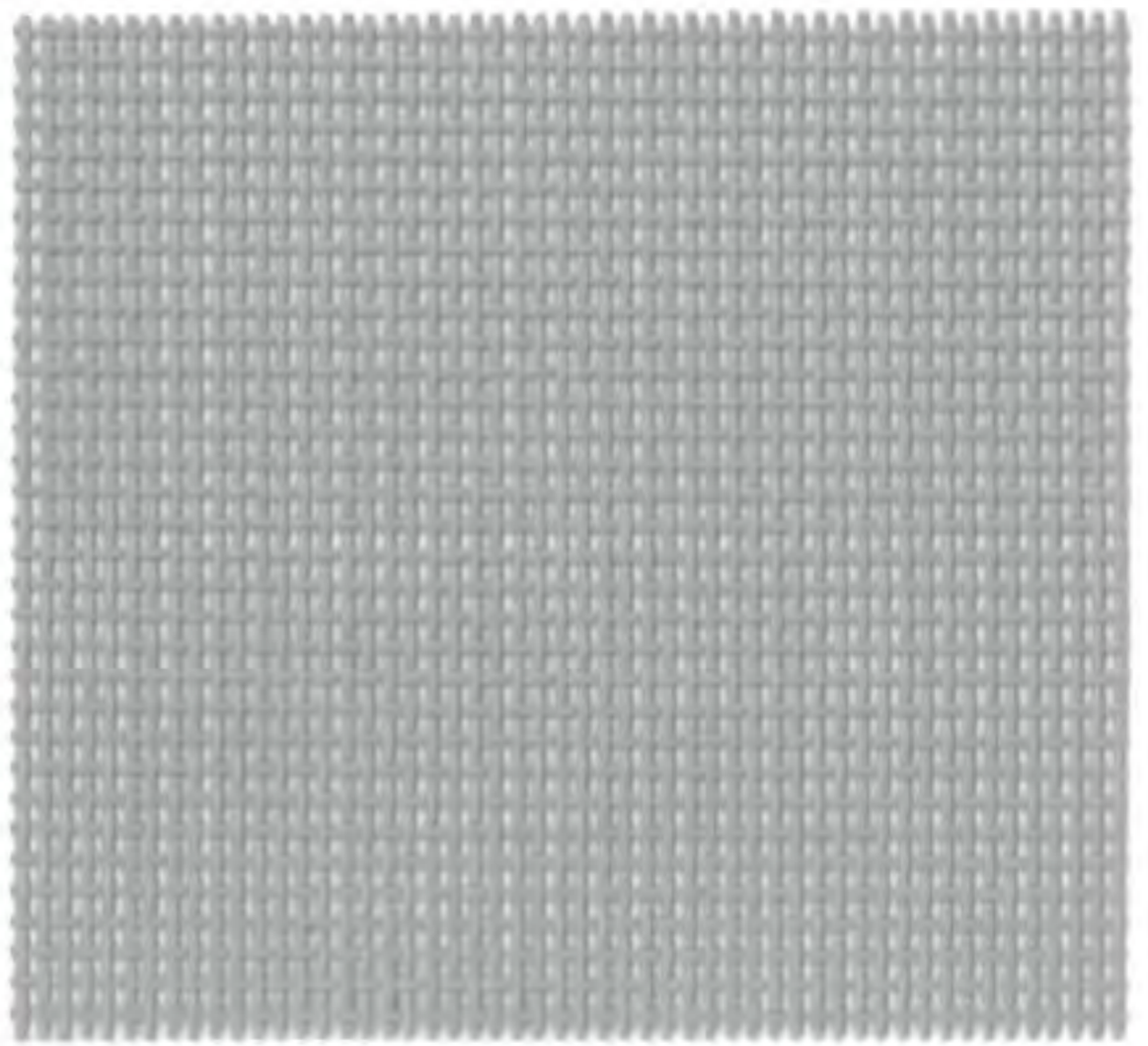
www.pycawnings.com

AwnTex - 70[®]

AwnTex 70[®] is a 17- by 11-count vinyl polyester mesh fabric. It has an openness factor of 30% and a shade factor of 70%. All backed by 5-year manufacturer's limited warranty. Flame retardant: CSFM, Title 19, NFPA-701 and ASTM E84



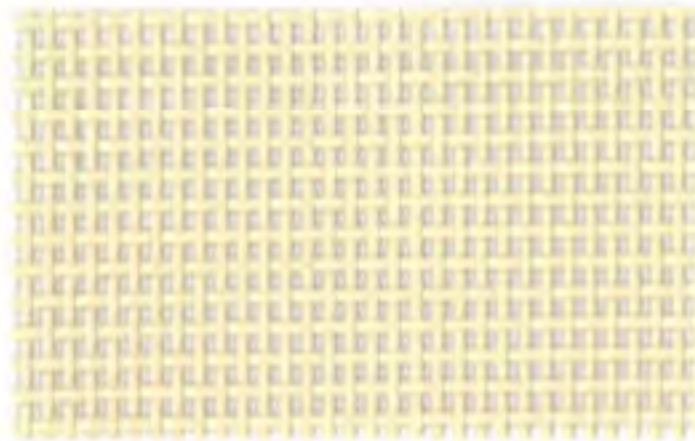
BLACK
863201
AwnTex 70 #Z81



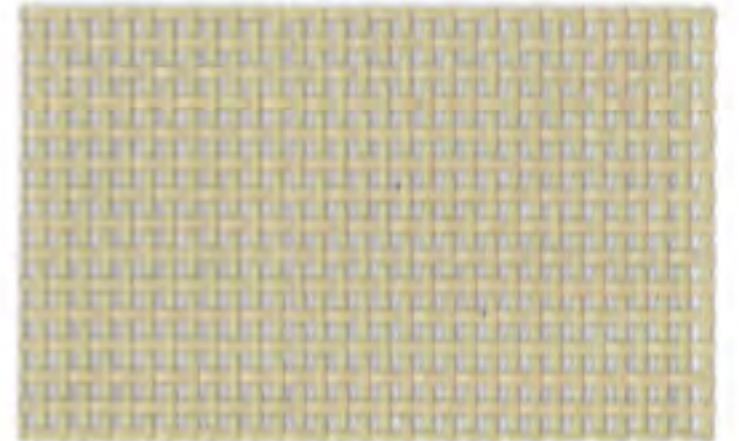
ASH GRAY
863215
AwnTex 70 #Z24



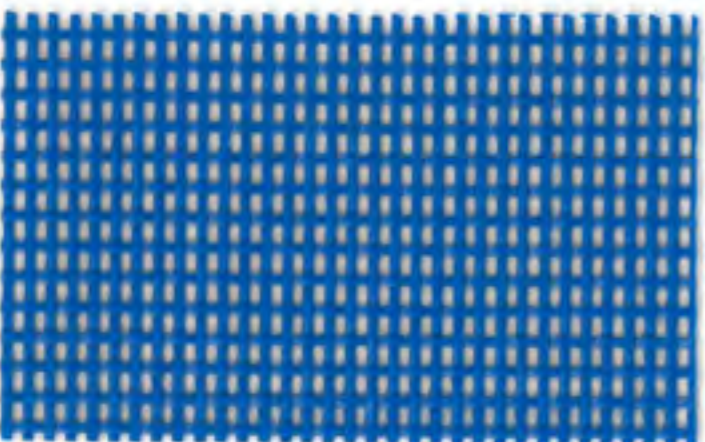
WHITE
863206
AwnTex 70 #OC2



ALMOND
863209
AwnTex 70 #OF1



BEIGE
863225
AwnTex 70 #EF1



ROYAL BLUE
863203
AwnTex 70 #HY0



SPRUCE GREEN
863218
AwnTex 70 #D70

Open Weave Awning Fabric

AwnTex - 160®

AwnTex 160® fabric provides shade without trapping heat or airflow, making it ideal for awning and umbrella applications. This 36- by 16-count woven polyester mesh fabric is flame retardant and resists UV rays, mildew and rot. AwnTex 160 has an approximate openness of 14.1% and a shade factor of 85.9%. All backed by 5-year manufacturer's limited warranty. Flame retardant: CSFM, Title 19, NFPA-701 and ASTM E84

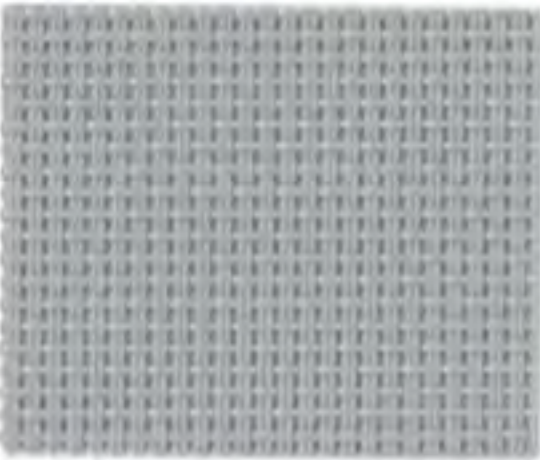
Winter Wheat (863422 #EF5), Dark Brown Tweed (863420 #NX8), and Almond/ Brown Tweed (863421 #NX6) are also available in 98" width.



BLACK
863409
AwnTex 160 #XMY



COAL TWEED
863414
AwnTex 160 #YIF



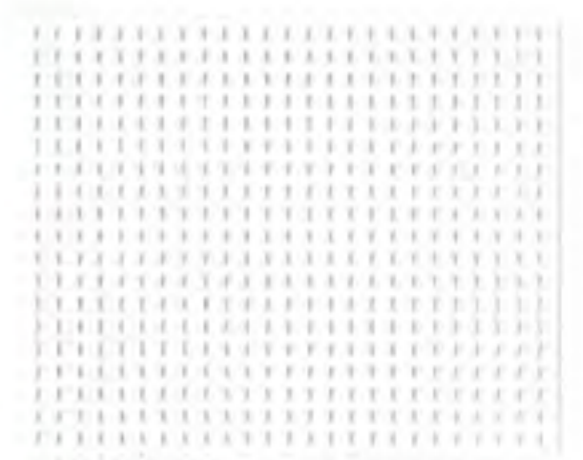
GRAY
863405
AwnTex 160 #XM2



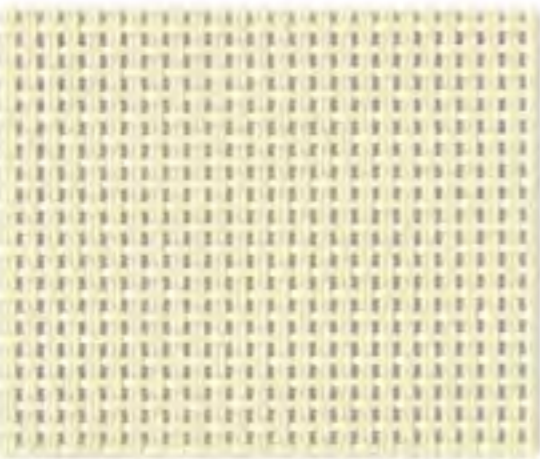
ASH TWEED
863415
AwnTex 160 #YIE



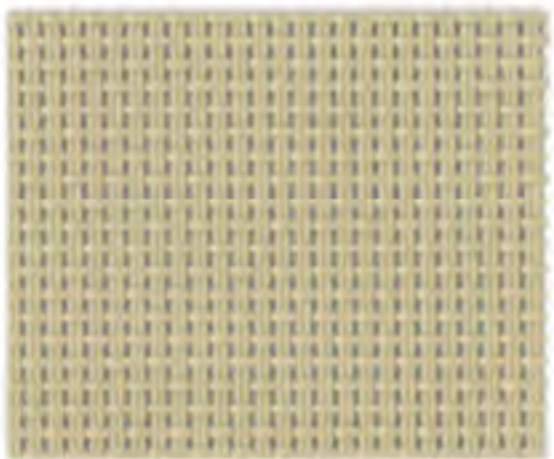
TAUPE
863417
AwnTex 160 #NX7



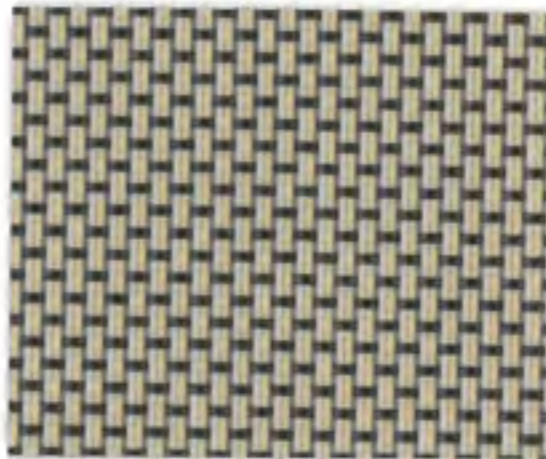
WHITE
863404
AwnTex 160 #0DY



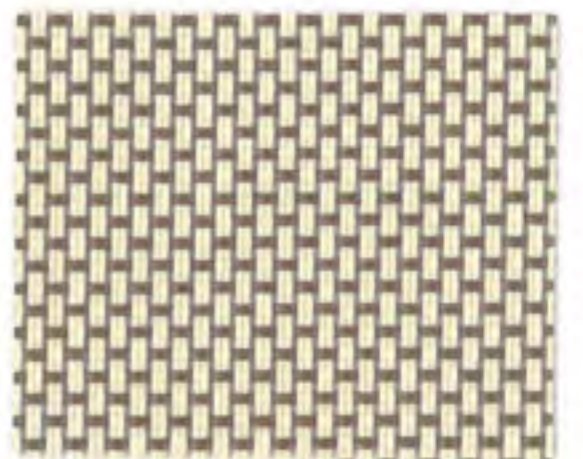
DESERT TAN
863408
AwnTex 160 #EF8



BEIGE
863402
AwnTex 160 #EF6



WINTER WHEAT
863400
AwnTex 160 #EF5



ALMOND/ BROWN TWEED
863418
AwnTex 160 #NX6



DARK BROWN
863403
AwnTex 160 #EF7



DARK BROWN TWEED
863416
AwnTex 160 #NX8



TERRA COTTA
863411
AwnTex 160 #KAV



BRICK TWEED
863412
AwnTex 160 #KAW



CABERNET TWEED
863419
AwnTex 160 #KAX



ROYAL BLUE
863407
AwnTex 160 #L42



DARK GREEN
863410
AwnTex 160 #DM3



OLIVE TWEED
863413
AwnTex 160 #DBZ